

Best Workplaces™
in Construction &
Infrastructure

Great Place
To
Work.

INDIA
2024™



Rising Towards



Tomorrow



Welspun^W ENTERPRISES

01 Who We Are

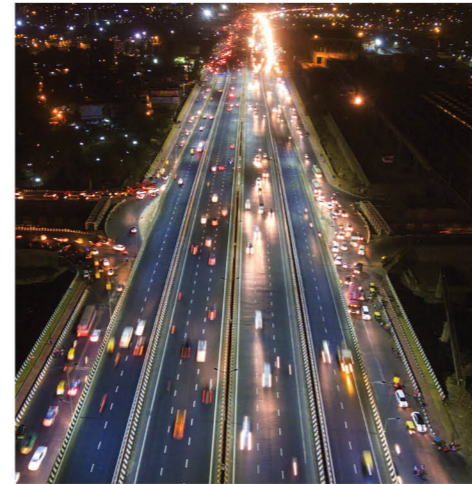
Welspun World	04
Chairman Speaks	06
Welspun Enterprises	08
Managing Director Speaks	10
About Us	12



02 Building a Better Tomorrow, Today

Water	15
Dharavi Wastewater Treatment Facility	16
Rural Water Supply Project under Jal Jeevan Mission	17
Dewas Industrial Area Water Supply Project	18
Greater Mohali Water Supply Project	19
Bhandup Water Treatment Facility	20
Welspun Michigan Engineers Limited	20
Transportation	21
Delhi-Meerut Expressway (NH 24)	22
Gagalheri-Saharanpur- Yamunanagar	24
Chutmalpur-Ganeshpur and Roorkee-Chutmalpur-Gagalheri	25
Maharashtra Amravati Package AM2	26
Chikhali-Tarsod	27

Mukarba Chowk-Panipat	28
Sattanathapuram-Nagapattinam	28
Aunta-Simaria (Ganga Bridge with Approach Roads)	29
Varanasi-Aurangabad	29



Oil & Gas	31
Kutch Offshore Basin	32
Mumbai Offshore Basin, near ONGC's prolific B-12 field	33
Mumbai Offshore Basin, near block MB-OSN-2005/2	33

03 Our Way of Life



Shaping a Successful Tomorrow	35
Robust Engineering and Design	36
Key Technical Capabilities	38
Quality	40
Safety	41
Accolades of Honour	42

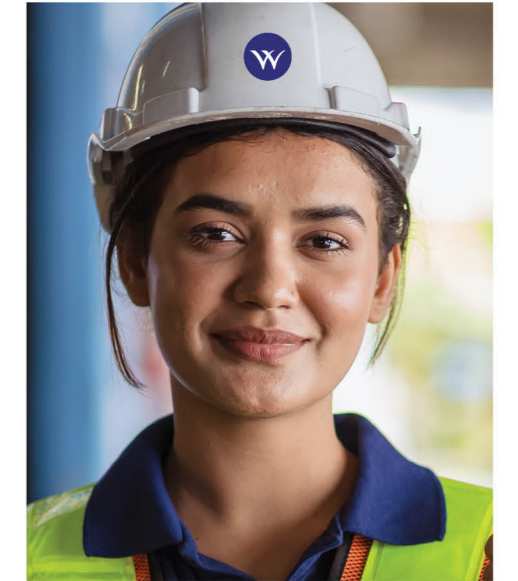
04 Ascending Towards Sustainability



ESG	45
Environment	46
Social	48
Governance	50

05 Our People, Our Pride

LITE	52
------	----



Welspun World

Welspun World, a prominent global conglomerate, stands as a beacon of innovation and social responsibility, committed to shaping a better future. This commitment is deeply ingrained in the company's core philosophies, driving its remarkable growth and success on the international stage.

Distinguished Reputation in Operational Excellence

Welspun World is one of India's fastest-growing conglomerates, with businesses in Line Pipes, Home Textiles, Building Materials, Infrastructure, Water, Steel, Warehousing, New Energy, Advanced Textiles and Flooring.



Leading Group Companies

Welspun Corp

Welspun Corp is a leading player in complete pipe solutions and building materials industry. It is one of the top three line pipe manufacturers globally, has forayed into ductile iron pipes to provide clean drinking water to households, and manufactures stainless steel pipes, tubes and bars through its subsidiary, Welspun Speciality Solutions. It has acquired Sintex BAPL – India's leading water storage tank manufacturer and also manufactures TMT rebars for the construction & infrastructure industry.

Welspun Enterprises

Welspun Enterprises is at the forefront of fulfilling India's escalating demands for infrastructure development, spanning roads, highways, water, and oil & gas projects. It has demonstrated high level of operational excellence in its projects, aided by robust engineering and design, supply chain, project management & execution capabilities. Its unwavering commitment to deliver complex projects on or ahead of schedule, backed by a strong, customer-oriented approach, quest for best-in-class quality & 'safety-first' attitude is the hallmark of its success.

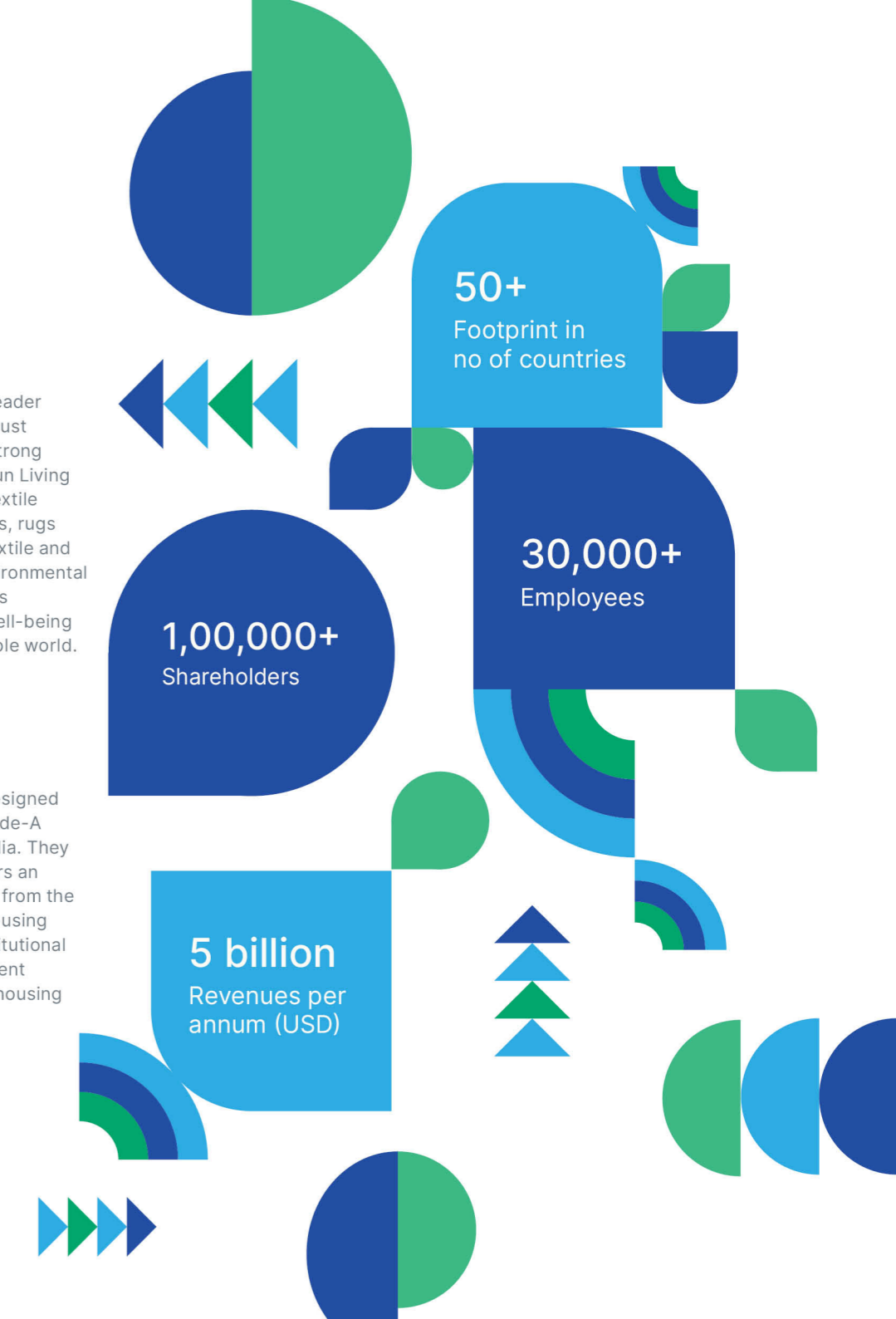
Welspun Living

Welspun Living stands tall as a global leader in the home textiles industry, with a robust presence in over 50 countries. With a strong focus on quality and innovation, Welspun Living offers an extensive portfolio of home textile products such as bed linens, bath linens, rugs and carpets, in addition to advanced textile and flooring solutions. Its dedication to environmental and social responsibility underscores its commitment to enhancing consumer well-being and fostering a smarter, more sustainable world.

Welspun One

Welspun One is an integrated fund and development management platform, designed to deliver large format, institutional Grade-A logistics and industrial parks across India. They were the first to offer domestic investors an opportunity to participate in, and profit from the growth and development of the warehousing sector in India in a transparent and institutional manner, using their in-house development expertise to deliver best-in-class warehousing infrastructure to its clients.

In essence, the Welspun World's journey is a testament to its unwavering dedication to excellence, innovation, and social responsibility, making it a trailblazer in the global business landscape.



WELSPUN

Pioneering Progress for the Future

B K Goenka

CHAIRMAN

*“Not just pioneers; we’re trailblazers-
Welspun is redefining the landscape
of progress.”*

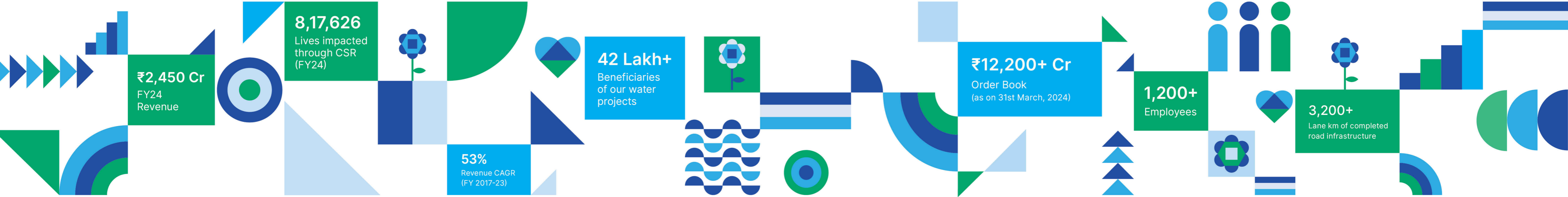


We take immense pride in bringing Welspun Enterprises' Coffee Table Book to you that highlights our projects and initiatives and echoes our unwavering commitment for tomorrow. The inspiration for this book stems from the NHAI e-Coffee Table Book titled "75 Milestones of Highway Development", which showcased all Welspun Enterprises' completed road projects, marking a moment of pride for each of us.

In recent years, Welspun Enterprises has embarked on an extraordinary journey of significant milestones and achievements. In 2022, we accomplished a ground-breaking feat by divesting six completed highway projects, totalling an asset value exceeding Rs. 9,000 Crore. This success was complemented by our doubling of revenue in FY23, marking our highest-ever revenue since inception. Such accomplishments stand as a testament to our robust strategy, superior execution, unwavering resilience, and agility.

Water scarcity is a critical global issue, and as a Company focused on ESG principles, Welspun Enterprises is playing a significant role in addressing this challenge, while contributing to nation-building. Revolutionary projects such as the Rural Water Supply project under Jal Jeevan Mission in Uttar Pradesh, the Dharavi Wastewater Treatment Facility and the recently secured Bhandup Water Treatment project in Mumbai are all set to enhance the lives of millions of citizens, ushering in a new era of sustainable growth. Additionally, acquiring a 50.1% stake in Michigan Engineers allows us to expand into the promising tunnelling solutions segment in India, further bolstering our commitment to innovative urban infrastructure development.

It fills me with immense pleasure to share our recent accolades, a testament of our dedicated focus on project management, execution and HSE. The Delhi-Meerut Expressway (Pkg 1) project, delivered 11 months ahead of schedule, earned the prestigious Gold Award for Excellence in Project Management from the Ministry of Road Transport and Highways. Additionally, our Chikhli-Tarsod Highway Project was recognized as the 'Unique Project of the Year' by ASSOCHAM. These accolades, among many others, deserve their place in celebrating Welspun's efforts in connecting people across rural and urban landscapes and empowering them with an improved way of life, as we continue our endeavour of realising our vision- *'Har Ghar Se, Har Dil Tak Welspun'*.



Wespun Enterprises

Wespun Enterprises Limited (WEL) distinguishes itself as an infrastructure developer committed to enhancing India's road and water assets. Leveraging a robust balance sheet, favorable credit ratings, and an asset-light approach, WEL focuses on high-value project management to ensure quality, safety, timely completion, and budget adherence. Notably, we completed the Delhi-Meerut Expressway project 11 months ahead of schedule and are presently working on the widest extradosed bridge over the Ganga River.

In 2022, we achieved a significant milestone by monetizing six completed road assets, generating over Rs. 9,000 crore and aligning with our objective of sustainable, value-accretive growth for stakeholders. Within the Water sector, we have advanced significantly over time, expanding our range of services to encompass diverse aspects of water management and infrastructure development across the entirety of the water spectrum. Our portfolio now includes solutions ranging from water supply to water & wastewater treatment plants, as well as urban water infrastructure and tunnelling solutions through our subsidiary, Wespun Michigan Engineers.

WEL extends its reach to the upstream oil & gas domain through the Joint Venture, Adani Wespun Exploration Limited (AWEL), aligning with the government's mission to transition towards a gas-based economy. Grounded in ESG principles, WEL is dedicated to sustainable business operations throughout its projects and functions.



Sandeep Garg

MANAGING DIRECTOR

“We are constantly fostering impactful innovations today for the preservation of tomorrow.”

A Positive Impact on Tomorrow

At Welspun Enterprises, our singular goal is to enact positive change that resonates in both the present and the future. Our projects serve as catalysts for positive impact that extend beyond merely enhancing road connectivity between districts or improving water quality and supply. They also encompass community development and education initiatives in the regions surrounding our projects, fostering holistic growth and progress.

Top of Form

Our innovative use of engineering excellence and high-performance construction materials have minimised impact on the delicate balance of biodiversity. Our roads, illuminated by energy-efficient LEDs, are not just pathways but canvases for vertical gardens—lush, living testaments to our dedication to beauty and sustainability. The installation of solar panels at our projects showcases our environmental mindfulness and commitment to balance energy requirements. I am pleased to affirm that ESG principles are inherent in every aspect of our operations, guiding our actions towards sustainable and responsible outcomes.

I am confident that with our strong foundation, we will continue to deliver many more projects that the nation needs, while delivering exceptional value and rewarding experiences for our stakeholders in the years to come.

As you immerse yourself in the pages of this special book, I am certain that you will be intrigued by our journey, which spans years and reflects our firm dedication to a future where progress seamlessly intertwines with the preservation of the present.

Happy reading!

Purpose

To propel country's growth by speed and scale of sustainable infrastructure development thus empowering lives.

Vision

Delight our customers with cutting-edge innovation and technology, fostering inclusive and sustainable growth to sustain excellence across all our business endeavors.

Mission

Our mission is to position ourselves as one of the top two value creators in each of our businesses, among the top 10 most respected Indian brands, and within the top 50 groups in India in terms of market value.

Values

At Welspun, we take pride in upholding these four principles that guide us towards creating a better future.



Learning

Learn, unlearn & relearn - discover something new everyday



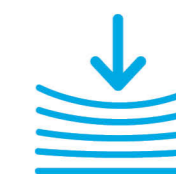
Innovation

Do things differently and do different things



Trust

Make truth & transparency a virtue



Endurance

Push beyond your limits and aspire for more

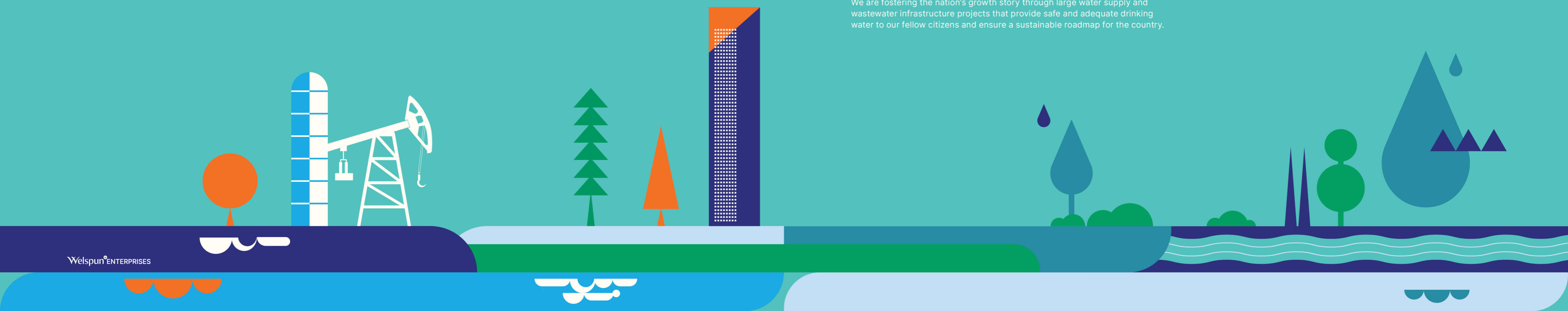


Building a Better Tomorrow, Today

Our Projects

Water

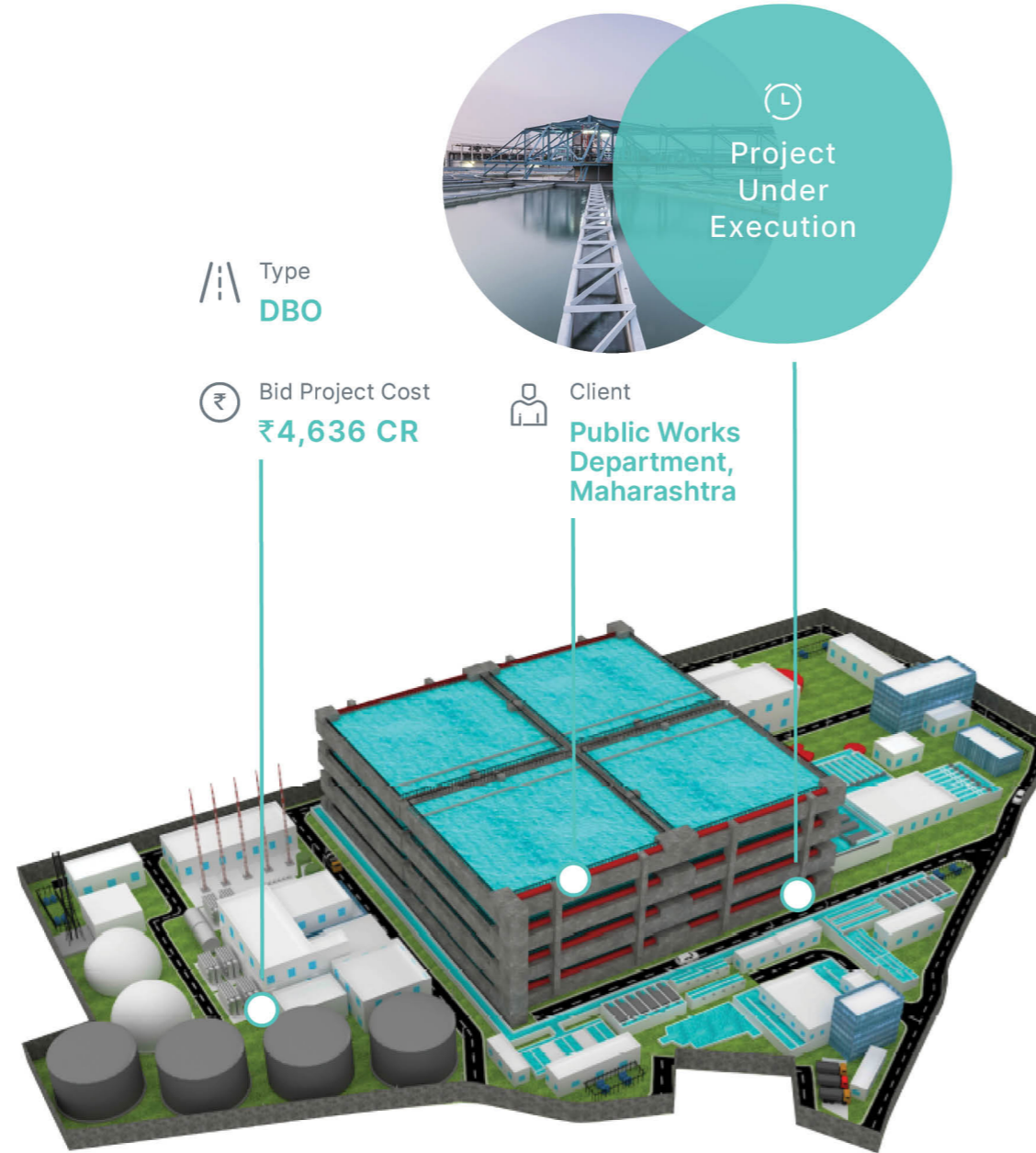
We are fostering the nation's growth story through large water supply and wastewater infrastructure projects that provide safe and adequate drinking water to our fellow citizens and ensure a sustainable roadmap for the country.



Dharavi Wastewater Treatment Facility

418 Minimal Liquid Discharge Wastewater Treatment Facility

- 01. This is the single largest value order secured by Welspun Enterprises in the essential sector of water infrastructure in India.
- 02. Spread over five hectares, the project involves design, construction and operation & maintenance of a 418 MLD Wastewater Treatment Facility, including 209 MLD Tertiary treatment plant, to fulfil the growing need of recycling and reusing wastewater.
- 03. Welspun Enterprises is deploying state-of-the-art space saving technology for secondary and tertiary level treatment of wastewater for maximum operational efficiency and output.
- 04. Once complete, this facility will be India's first and the world's only second multistoried wastewater treatment plant and will immensely contribute towards cleaner and greener environment for Mumbai City.
- 05. The project's long-term operation & maintenance of 15 years will significantly help local population through capacity building and job opportunities.



Rural Water Supply Project under Jal Jeevan Mission

Engineering, Design, Construction and Operation and Maintenance of Rural Water Supply schemes in Uttar Pradesh

- 01. Aligning with the Group's vision of 'Har Ghar Se Har Dil Tak Welspun', the project is aimed to ensure supply of clean, drinking water to 40 lakh beneficiaries in Uttar Pradesh.
- 02. Part of the 'Har Ghar Nal Se Jal' scheme under the prestigious Jal Jeevan Mission of Government of India, the project involves development of end-to-end infrastructure for supply of water to over 2,500 villages in five districts of Ayodhya, Varanasi and Meerut.
- 03. As part of this project, Welspun Enterprises has designed water supply systems and is constructing over 1,000 tube wells with solar-powered Pump Houses, Package Chlorination Plants, Elevated Service Reservoirs, and laying 15,000 km of pipelines along with 6 lakh House Service Connections.
- 04. The project will help in capacity building and generation of numerous employment opportunities for the local populace, especially during the operation & maintenance phase.
- 05. In line with our focus on ESG, we are installing solar panels totaling to 27 MW across project sites to offset grid electricity required by pumping stations to distribute water.



Dewas Industrial Area Water Supply Project

29.5 Minimal Liquid Discharge Water Supply Project

01. One of the few PPP water supply projects in India, it involves constructing facilities for over 300 manufacturing units in Dewas Industrial Area, ensuring a reliable water distribution system.
02. Welspun Enterprises' efficient project management led to the timely completion of the EPC works within 15 months.
03. We've implemented advanced SCADA automation for plant operations, optimizing cost and time through efficient power consumption.
04. Our digitalization efforts include automated water metering for timely billing and digital payment mechanisms.
05. Continuous water supply has attracted new businesses to Dewas, fostering regional development and growth.
06. The project received recognition for 'Outstanding Contribution in Urban Infrastructure (Water Project)' at the 2023 EPC World Awards.

Type
DBFOT

Completion Cost
₹146 CR

Client
Madhya Pradesh State Industrial Development Corporation Ltd.



Greater Mohali Water Supply Project

Augmentation of 80 Million Gallons per Day Water Supply Scheme for Greater Mohali Area

01. This is the first Water Supply project implemented by Welspun Enterprises that feeds water to newly developed areas of Mohali in Punjab.
02. The project involved construction of Intake, Pump House and laying of 2+ metre diameter steel pipeline spanning 20+ km, in addition to O&M works for five years.
03. Completion of this critical project brought significant relief to Mohali residents, who were reeling under acute water shortage for several years.

Bhandup Water Treatment Facility

Welspun Enterprises Limited has secured the Design Build and Operate (DBO) contract of 2,000 MLD Water Treatment Plant at Bhandup Complex, Mumbai, from BMC.

01. The total contract is valued at Rs. 4124 crores (including O&M value Rs. 1,880 Crores)
02. One of the largest in the world in terms of capacity.
03. Partnered with Veolia, one of the world's largest technology company in the water sector, as Technology Provider.
04. To leverage advanced processes and technologies to maximize resource utilization & develop sustainable solutions.





Welspun MICHIGAN

Welspun Enterprises acquired 50.10% of Michigan Engineers for ₹137.07 Cr

Welspun Michigan Engineers Limited (WMEL)

Welspun Enterprises' 50.1% stake in Michigan Engineers propels its presence in water and tunnelling solutions. Leveraging their expertise, Welspun aims for industry leadership, driven by solid financial and strategic alignment with India's initiatives for the future.

- 01. Marks Welspun's entry into tunnelling and urban water infrastructure segment, diversifying its portfolio.
- 02. WMEL's trenchless technology expertise aids Welspun in micro & segment tunnelling, sewer rehabilitation, and more.
- 03. Combined technical knowhow and execution capabilities to provide sustained competitive advantage.
- 04. Aligns with government initiatives for India, positioning Welspun's Water vertical for substantial growth.

Strategic benefits

Strengthens WEL's project portfolio	Expand project capabilities
Leverages synergies	Capitalises on favourable market trends

Services offered

Large diameter tunnelling	Micro tunnelling for pipelines	Pipeline rehabilitation
Greywater pumping stations	Drill, blasting & dredging	Bridge construction

Our Projects

Transportation

Synonymous with exceptional quality and an impeccable execution track record, we are at the forefront of developing and operating world-class road assets that are essential for India's economic growth and development.



Delhi-Meerut Expressway (NH 24)

14-lane expressway Six-laning of Delhi-Meerut Expressway & eight-laning of NH-24 in New Delhi

Type
HAM

Length
8.716 KM

Completion Cost
₹896 CR

Client
NHAI



01. A jewel in the crown for Welspun Enterprises, the Delhi Meerut Expressway is India's first 14-lane green expressway & first HAM project, designed to ease traffic congestion and reduce travel time between New Delhi & Uttar Pradesh, and curb pollution in the region.
02. Completed in a record time of 19 months, this landmark project has been conferred with several prestigious awards, including a Gold Award in 2022, for Excellence in Project Management by the Ministry of Road Transport and Highways. The project was also featured as an 'Engineering Marvel' on History TV18 channel.
03. The project has established several industry benchmarks in highway infrastructure and features vertical gardens with drip irrigation, solar panels to generate green energy, LED lights for enhanced visibility and separate lanes for cyclists and pedestrians, amongst others.
04. The expressway also boasts of several technologically advanced features such as the Intelligent Transport System (ITS), Toll Plaza Management System and Highway Traffic Management System (HTMS) to ensure a smooth and safe journey for commuters.
05. The project is a testament to strong government impetus and exceptional project planning and management by NHAI and Welspun Enterprises.



Gagalheri-Saharanpur -Yamunanagar

Four-Laning of Gagalheri-Saharanpur-Yamunanagar section of NH-73 in Uttar Pradesh and Haryana

01.

The project involved widening and upgrading of the existing Gagalheri-Saharanpur-Yamunanagar road, which connects the towns of Gagalheri in Uttarakhand, Saharanpur in Uttar Pradesh and Yamunanagar in Haryana, after crossing Yamuna River at UP/Haryana border.

02.

The project has significantly improved the connectivity of the region, especially in terms of trade and commerce.

03.

It has also reduced travel time and improve road safety, which is benefitting local population as well as the commuters passing through the region.

Type
HAM

Length
51.455 KM

Completion Cost
₹1388.50 CR

Client
NHAI

Project
Completed
In 2022

Chutmalpur-Ganeshpur and Roorkee-Chutmalpur-Gagalheri

Four-Laning of Chutmalpur-Ganeshpur section of NH-72A & Roorkee-Chutmalpur-Gagalheri section of NH-73 in Uttar Pradesh and Uttarakhand

01.

The aim of the project was to improve the connectivity of several towns and villages in the state of Uttarakhand.

02.

The project involved widening and upgrading of existing roads on NH-72A and NH-73, which connects the towns of Chutmalpur, Gagalheri, Roorkee, and Ganeshpur, in addition to the construction of two bypasses for Roorkee town and Chutmalpur town in Uttar Pradesh and Uttarakhand, respectively.

03.

The road project has significantly benefitted citizens as well as commuters through improve connectivity and reduction of travel time, and has also enhanced of trade and commerce in the region.

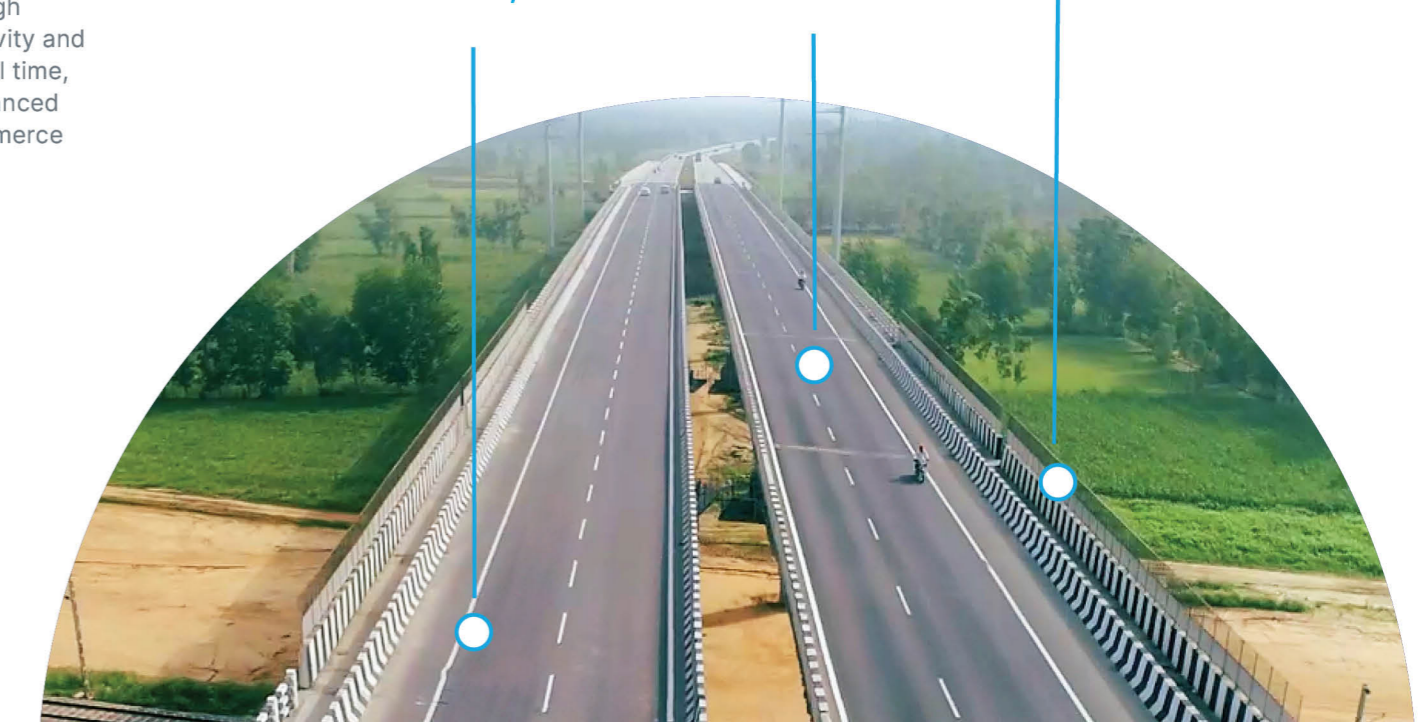
Type
HAM

Length
53.3 KM

Completion Cost
₹1,108.50 CR

Client
NHAI

Project
Completed
In 2022



Maharashtra Amravati Package AM2

Upgradation of roads in Maharashtra State of Two-laning Road with paved shoulder under MRIP Package

01.

The project involved redesigning and upgrading the existing intermediate lane road to a modern two-lane road to ensure safe and efficient movement of traffic and improve the sustainability of the road network.

02.

With the newly developed roads now connected with NH-56, the project has significantly increased connectivity of several villages with the District headquarters and eased logistical challenges of farmers to transport their produce to larger cities of Maharashtra.

03.

Demonstrating innovation, Welspun Enterprises constructed a minor bridge in the form of Bandhara Dam across a water stream to raise its water level for harvesting and irrigation purpose, greatly benefitting the farmers and local population.

04.

Despite challenges such as rolling terrain and forest zone, restricted working hours, fear of wild animals and transportation of material in remote locations, our team completed the project without any untoward incident and in a timely manner.

Type
HAM

Length
352.15 KM

Completion Cost
₹1,650 CR

Client
Public Works Department, Maharashtra



Chikhali-Tarsod

Four-laning of Chikhali-Tarsod (Package-IIA) section of NH-6 in Maharashtra

01.

A crucial link in the 593 km Nagpur-Surat Economic Corridor, the project was aimed to uplift and touch lives of citizens in the hinterlands of the Nation and connect them with the aspirations of urban India.

02.

Welspun Enterprises upgraded the existing highway to a modern, 4-lane corridor that reduced travel time from Chikhali to Tarsod to just one hour, from 3.5 hours earlier.

04.

Welspun's upskilling workshops for toll operators, control & security and road maintenance personnel created numerous job opportunities, leading to a reduction in talent migration in the region.

03.

Through smooth and accident-free roads, the project has been instrumental in transforming the lives of the local population, especially farmers, students and working-class individuals.

05.

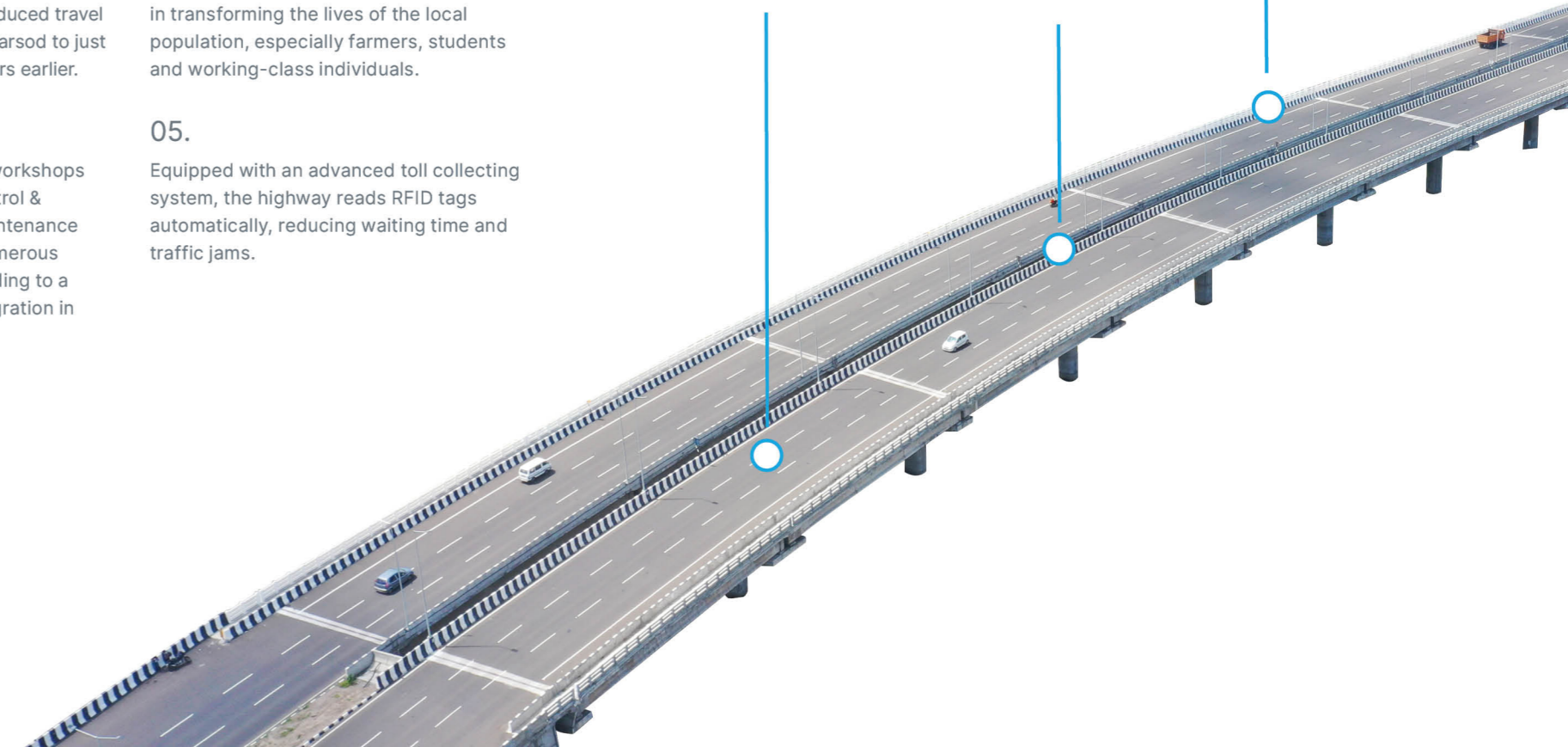
Equipped with an advanced toll collecting system, the highway reads RFID tags automatically, reducing waiting time and traffic jams.

Type
HAM

Length
62.7 KM

Completion Cost
₹1,259.80 CR

Client
NHAI



Mukarba Chowk - Panipat

Eight-laning of Mukarba Chowk to Panipat section of NH-1 in New Delhi and Haryana

- 01. The project is part of the Grand Trunk Road, one of Asia's oldest and longest major roads and accommodates heavy traffic to and from North India.
- 02. The eight-lane project reduced travel time from New Delhi to Panipat to just one hour, from 2.5 hours earlier.
- 03. The technologically advanced project is equipped with 100% ETC-based toll collection system and electronic calling booths (ECB) for assistance in case of emergencies.
- 04. Development of this stretch is significantly enhancing the socio-economic conditions of several regions in New Delhi and Haryana.

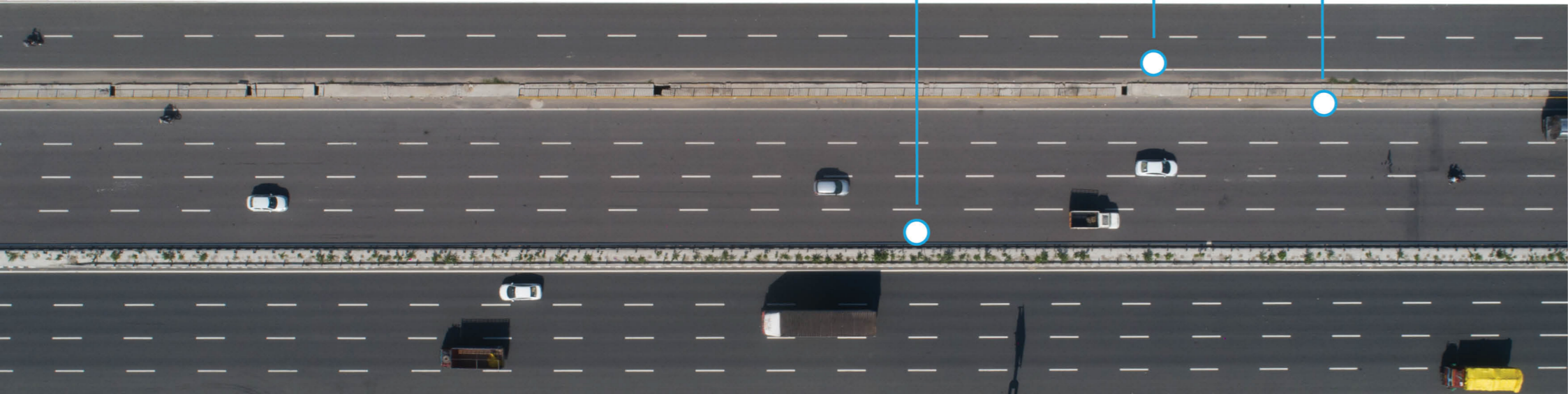


Type **BOT (Toll)**

Length **70.5 KM**

Completion Cost **₹1,524 CR**

Client **NHAI**



Projects Under Execution

Sattanathapuram - Nagapattinam

Four-laning of Sattanathapuram - Nagapattinam section of NH-45A (New NH- 332) in Tamil Nadu

- 01. The project is an important corridor for enhanced connectivity with ports such as Chennai, Tuticorin, Puducherry and Cuddalore.
- 02. The stretch improves access to several educational institutions, pilgrim centers and heritage structures.
- 03. Four-laning of the highway shall reduce travel time by about half an hour and enhance faster movement of goods to ports and district headquarters.



Aunta - Simaria (Ganga Bridge with Approach Roads)

Six-laning of Aunta-Simaria section of NH-31 in Bihar, including construction of one of the widest extradosed bridge on Ganga River

- 01. The project involves construction of Asia's second widest extradosed cable-stayed bridge, with segments spanning up to 230 metres.
- 02. The project will significantly enhance connectivity between the two districts and create the shortest route to travel to North-eastern parts of India.
- 03. Special construction products such as silica fume have been utilized to enhance durability of structures.

Varanasi - Aurangabad

Six-laning of Varanasi-Aurangabad section of NH- 2, in Uttar Pradesh and Bihar

- 01. The project plays an important role in connecting New Delhi to Kolkata, along with other cities of economic importance.
- 02. The project has resulted in reducing the travel time from Varanasi to Aurangabad by one hour and has enhanced the convenience and safety of the commuters.
- 03. Environment-friendly construction materials such as Pond Ash was utilized to minimize the impact on ecology.
- 04. UP section inaugurated and dedicated to the Nation by Hon'ble Prime Minister Shri Narendra Modi





Our Projects

Oil & Gas

Aligning with the government's focus on responsible exploration and production of oil and natural gas in India, we have made significant investments in the hydrocarbons sector through a joint venture with the Adani Group.



Kutch Offshore Basin

Block

GK-OSN-2009/1.
Awarded under NELP-IX Bid round
ONGC is the Operator of this JV Block (PI-50%).
AWEL has a 25% PI and IOCL holds 25% PI

Details

The block consists of one exploratory well
and two appraisal wells.

Status

Gas discovery has been made at multiple levels;
Field Development Plan is currently under finalization.



Mumbai Offshore Basin, near ONGC's prolific B-12 field

Block

MB-OSN-2005/2
Awarded under NELP-VII Bid Round

Status

Plans are on for early monetization though
development. Field Development Plan is currently
being finalized.

Details

A gas discovery has been made by Adani Welspun Exploration Limited (AWEL) in the second
exploratory well drilled under Exploration Phase-II (2021).

Mumbai Offshore Basin, near block MB-OSN-2005/2

Contract area

MB/OSDSF/B9/2016.
Awarded under DSF-I bid round

Status

Field Development Plan has been approved by
Directorate General of Hydrocarbons.

Details

Contract area has two fields, viz: B-9, a gas
field and BRC, a predominantly oil field. Three
exploratory wells drilled in the B-9 field has
encountered gas in Daman formation. Encouraging
results prompted AWEL to drill one appraisal-
cum-development well in B-9 field in 2021; target
reservoir successfully encountered.



Our Way of Life

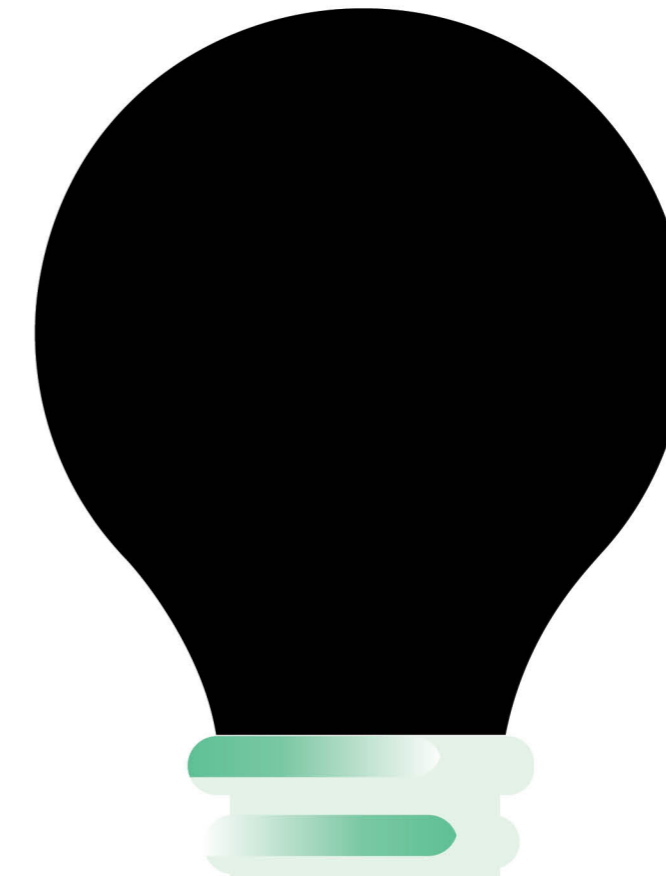
Committed to a smarter, more sustainable world, Welspun accelerates growth, connects people, and spans horizons. Our focus on improving quality and expanding accessibility reflects an unwavering dedication.

Embracing innovation and responsibility, we envision a future marked by swift and enduring progress. Welspun aims to contribute meaningfully, creating a brighter, interconnected, and environmentally conscious world.



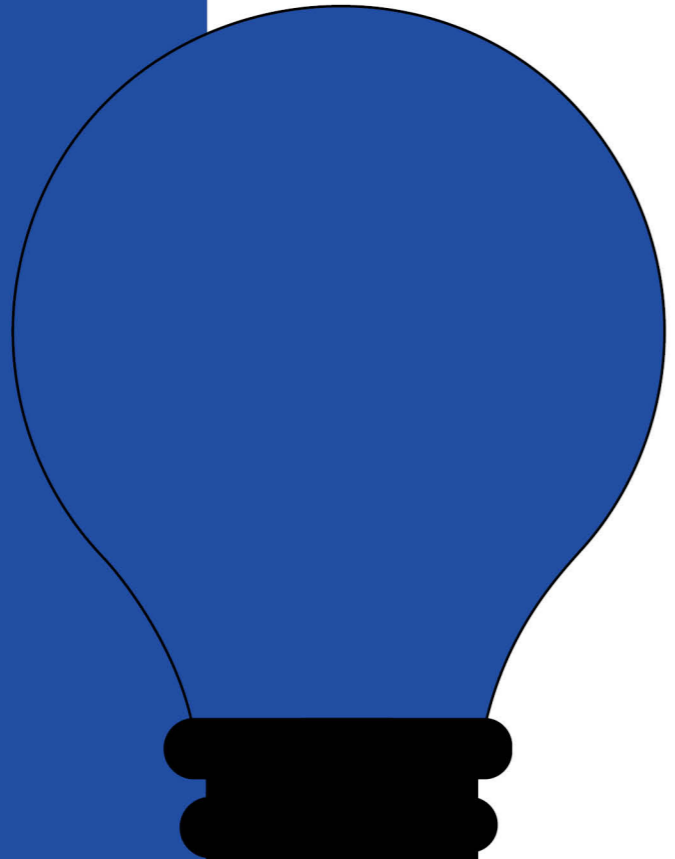
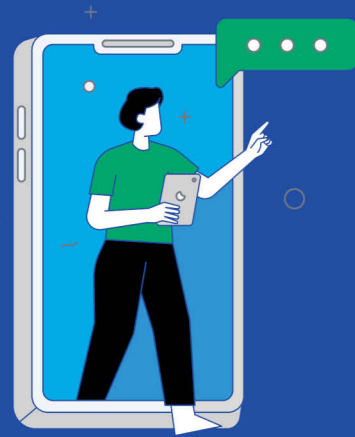
Shaping a Successful Tomorrow

Welspun Enterprises envisions a future where innovation and sustainability converge, creating a landscape where progress is not only swift but also enduring.



Robust Engineering and Design

At Welspun, we stand at the forefront of engineering excellence, specializing in the development, modernization, and rehabilitation of sustainable roads, highways, and water and wastewater infrastructure. Our commitment to excellence drives us to employ a multidisciplinary approach, offering a spectrum of design and engineering services infused with best-in-class technology solutions, advanced design software, and specialized value engineering.



How we make a difference

End-to-End Expertise

We provide end-to-end design and engineering solutions, seamlessly navigating through bidding, execution, and commissioning phases.

Global Talent Pool

Our in-house talent pool of over 25 design engineers, complemented by experienced international consultants, ensures the delivery of feasible, innovative, and cost-effective solutions.

Adaptability to Challenging Conditions

Capable of designing and developing large-scale projects across challenging conditions, whether it's extreme weather or difficult terrain.



Cutting-Edge Software

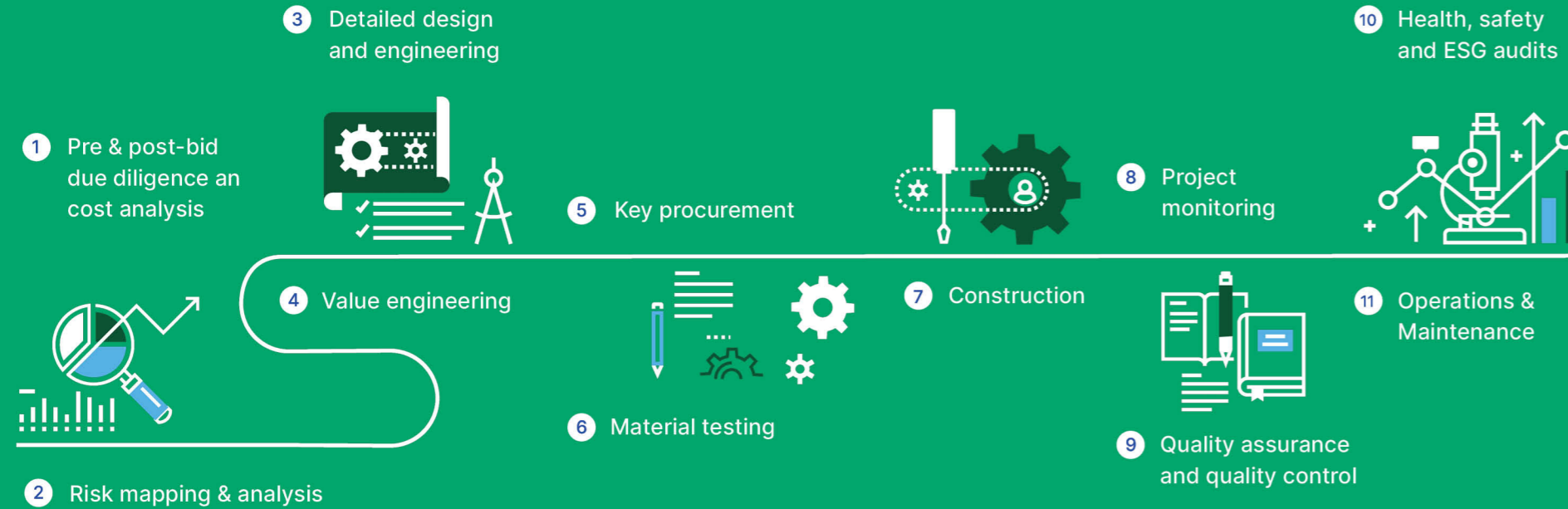
Equipped with leading-edge software, including Open Roads, Civil 3D, STAAD Pro, MIDAS, OASYS, AutoCAD, IITPAV, and KGPBACK, enabling the development of roads, highway projects, and integrated water supply schemes.

Leveraging Digital Technologies

Harnessing advanced and globally recognized digital technologies such as LiDAR, drones, and photogrammetry, we conduct precise topographic surveys, pushing the boundaries of engineering innovation.



Key Technical Capabilities



Project Management Excellence

At Welspun Enterprises, our commitment to project management is defined by a focused approach to planning, scheduling, and controlling, ensuring the timely closure of projects. With a proven track record, we consistently deliver within allocated timeframes and budgeted costs, earning trust through risk-minimized execution and a steadfast commitment to safety.

How we make a difference

Asset-Light Model

Operating with an asset-light business model allows us to cultivate relationships with sub-contractors, emphasizing high-quality and cost-efficient execution for enduring success.

Digital Transformation

Embracing digitalization and technology, we employ tools such as Power-Bi, nPulse by Bentley, and Live Aerial Videography, implementing a digital twin model for real-time project tracking. Project-specific digital dashboards capture diverse activities, schedules, billing status, cash flows, and expenses, enhancing overall project control.



Network Strength

Leveraging a robust vendor and supplier network, we seamlessly execute projects of varying complexities across diverse geographies.

Risk Management Framework

Our well-defined risk management framework identifies project issues early, enabling prompt development of mitigation strategies to minimize impacts on schedules, budgets, and overall success.



Expert Project Teams

Our highly qualified and energetic project management teams are dedicated to exceeding customer expectations, ensuring the successful delivery of projects within stipulated timelines.

Quality

Enhanced focus on quality management throughout the project life cycle.

Delivering the highest standards of quality is of supreme importance in the infrastructure sector. At Welspun Enterprises, it is critical that our projects withstand the test of time for the years to come. Our consistent focus on quality over the years has enabled us to achieve this and meet & exceed stakeholder expectations across projects.



How we make a difference

1. Strong Quality Management Systems (QMS), with "Plan-Do-Check-Act" principle at the core of all our processes.
2. QMS supported by comprehensive practices such as Project Quality Plans, Standard Operating Procedures, Method Statements and Checklists.
3. Thorough evaluation, approval and monitoring of subcontracted services as per technical specifications and standards.
4. Regular audits and reviews by reputed auditors for continual improvement.
5. Adoption of "5 Why" analysis technique for precise root cause analysis, appropriate corrections and corrective actions that must be undertaken to avoid recurrence of identified issues (if any).
6. Utilization of special products in construction such as fly ash, GGBS and silica fume to develop high-strength, high performance concrete and to increase durability of structures and pavements.
7. Leveraging advanced technologies and digitalization tools in functions for improved efficiency and productivity.

Enhancing Quality through Technical Training



Frontline engineers, supervisors and workers from Welspun as well as subcontractor partners covered.



Continuous training and development to enhance workmanship and overall quality of the structures.



Experienced trainers from reputed institutes as well as renowned independent consultants appointed for technical and skill upgradation training.

Safety

Enhancement and advocacy of safety best practices in construction.

Aligned with our 'Safety First' motto, we are dedicated to fostering a positive safety culture. This involves the promotion of Health, Safety, and Environment (HSE) discipline and the implementation of optimal safety management systems across our offices and project sites. We are committed to a continual enhancement of our HSE systems, aspiring to create an "injury-free" work environment for our entire workforce.



How we make a difference

1. Implementation of a comprehensive HSE Policy to ensure responsible and ethical business conduct, prioritizing occupational health and safety for people, property, and the environment.
2. Conducting thorough reviews of HSE performance at both the Board of Directors and project levels, aligning with our commitment to achieving Zero Harm.
 - Implementation of a detailed Road Safety Plan for monitoring safety measures and ensuring smooth construction.
 - Deployment of safety systems in high-risk operations with the aim of zero accidents.
 - Installation of specially designed Safety Nets to minimize the impact of unexpected falls from work-at-height locations.
3. Employing safe construction practices and job safety assessments to navigate challenging conditions at roads and water project sites.
 - Risk-based skill development and safety workshops to instill safety consciousness and improve outlook towards loss prevention.
 - Site demonstrations, classroom sessions, virtual and online training, including specially designed e-learning modules.
4. Conducting training and awareness programs on 'Safety in Construction' for WEL employees and contractors.
 - Regular HSE audits on each project to ensure employee safety, regulatory compliance, and environmental compliance.
5. Regular HSE audits on each project to ensure employee safety, regulatory compliance, and environmental compliance.
6. Participation in National Safety Week and Road Safety Awareness campaigns to promote HSE discipline and raise awareness about the importance of safe working practices.
7. Recognition and rewards for workers and contractors across sites, acknowledging their exceptional commitment to developing safer work practices and improving workplace safety.



Accolades of Honour

Our commitment to superior project management, timely delivery, safety and quality has garnered awards and recognition from clients and the industry.



 Gold Award for Excellence in Project Management for Delhi-Meerut Expressway, MoRTH



 Top Challenger 2022-23 award, Construction World



 Fastest Growing Construction Company award, Construction Times



 Gold 4-Star Road Safety Award by World Safety Organization




 Chairman Commendation Award for Safety, CIDC Vishwakarma Awards 2023




 Best Employer Brand 2023 award, World HRD Congress

 Unique Project of the Year award for Chikhli-Tarsod Highway, ASSOCHAM



 Outstanding Contribution in Urban Infra award for Dewas Water Supply project, EPC World




 Occupational Safety & Health award for Aunta-Simaria Road Project, NSCI



 Excellence in Road Safety – Construction award, OSH India Awards 2023



 Excellence in Sports CSR, India CSR Leadership Awards 2023



Ascending Towards Sustainability

Welspun Enterprise has been on a journey towards sustainable and responsible business practices with an unwavering commitment to Environmental, Social, and Governance (ESG) principles with their strategic approach to infrastructure projects that not only meet immediate needs but also foster long-term environmental and societal well-being. From prioritizing energy efficiency and sustainable materials to engaging communities and enhancing resilience, Welspun's initiatives showcase a holistic dedication to shaping a future where business thrives in harmony with the environment.



ESG

Sustainability in infrastructure projects is essential to ensure that the project not only meets the immediate needs but also has minimal negative impact on the environment and society in the long term. With sustainability as the core of our business at Welspun Enterprises, critical considerations are planned and to be implemented in our projects.

Welspun Enterprises Ltd. has been awarded a "C" rating in the CDP Climate Change Program, signifying a robust comprehension of the impacts and climate-related issues within its operations. This rating is in line with both the Asia regional average and the global average according to CDP standards.

Energy efficiency

Energy-efficient design and operation of infrastructure.



- ↓ Reduces greenhouse gas emissions.
- ↑ Lowers operating costs.
- ↓ Increases the lifespan of the project.

Sustainable materials

Sustainable materials like recycled or locally sourced materials



- ↓ Reduce the project's carbon footprint.
- ✕ Minimize the negative impact on the environment.

Biodiversity Protection

The projects are constructed to minimize the impact on wildlife habitats, wetlands and other sensitive ecosystems to



- 🔄 Create green corridors.
- 🔄 Restore degraded ecosystems.
- 🔄 Protect biodiversity hotspots.

Community Engagement

Community engagement is critical to ensure that the projects



- ↔ Meet the needs of the local community.
- ✕ Does not cause adverse social impacts.

Resilience

Projects are designed to withstand extreme weather events and other climate-related risks



- 🔗 Incorporating climate considerations into the project design.
- 📈 Taking steps to adapt to future climate conditions.

Environment

The environment sustains human life, providing essential resources and ecosystem services. Protecting it is crucial for well-being, requiring reduced environmental impact, renewable energy use, waste reduction, and resource conservation. Shifting mindset towards interconnectedness and harmony with nature is pivotal.



Our Aspirations

Material Tracking

- Reducing GHG emissions in construction materials.
- Promoting circular economy, supply chain sustainability, and operational efficiency.



GHG Inventory

- Mitigating climate change through sustainable development.
- Enhancing resource efficiency and complying with regulations.

Carbon Footprint Analysis

- Identifying sustainable investment opportunities and mitigating climate risk.
- Enabling sustainable finance and improving project viability.

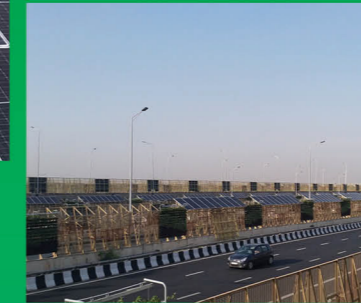
Sustainability Initiatives

Solar Panels in UP Jal Jeevan Mission



Installing **27 MW** capacity to offset pump house energy needs.

Solar Panels on Delhi Meerut Expressway



1 MW system offsets energy consumption and contributes to the grid.

LED Street Lighting



Adopting energy-efficient LEDs across road projects.

Pond Ash Usage



Reducing earth burrows in road projects, minimizing biodiversity impact.

Vertical Landscaping



Installing **285 units** of Vertical Gardens on Nizamuddin Bridge for beautification.

Social

We are proactive to the immediate global need for sustainable practices and share a cherished bond with the communities around us. With a steadfast commitment in the areas of Education, Empowerment, Environment and Health, we work closely with the surrounding villages to touch, heal and better their quality of life. In everything we do, there is a strong commitment to sustainable development, balancing the needs of the present with those of the future.



WelNetrutva

To empower women in rural areas by creating farm and non-farm-based livelihood opportunities.

69,000+
Beneficiaries



WelShiksha

To enhance the teaching & learning process for teachers & students, we have taken up the initiative to digitalize government primary school classrooms. Community driven initiatives ensures that not just the students, but the community also participates to understand the importance of education.

300+
Smart Classes

700+
Classrooms

1,61,000+
Students Reached



WelSwasthya

To improve the preventive & curative health aspects of adolescent girls, women and community at large.

3,17,000+
Beneficiaries



Welspun Super Sports Women Program

To empower female athletes from challenging backgrounds, in achieving their sporting endeavors and creating ambassadors of change.

17 Athletes
141 Medals
12 Sports

WelKrishi

Working together with the farming community led by experts to help them grow better produce, facilitate and get them the best of government schemes.

1,19,000+
Beneficiaries



WelSuraksha

The program creates awareness on road safety and provides curative measures to the high-commuting community.

1,38,000+
Beneficiaries

WelPrakruti

Welspun's green initiatives are factored into the WelPrakruti program. All activities related to nature constitute the program.

20,000+
Trees Planted



WeVolunteer

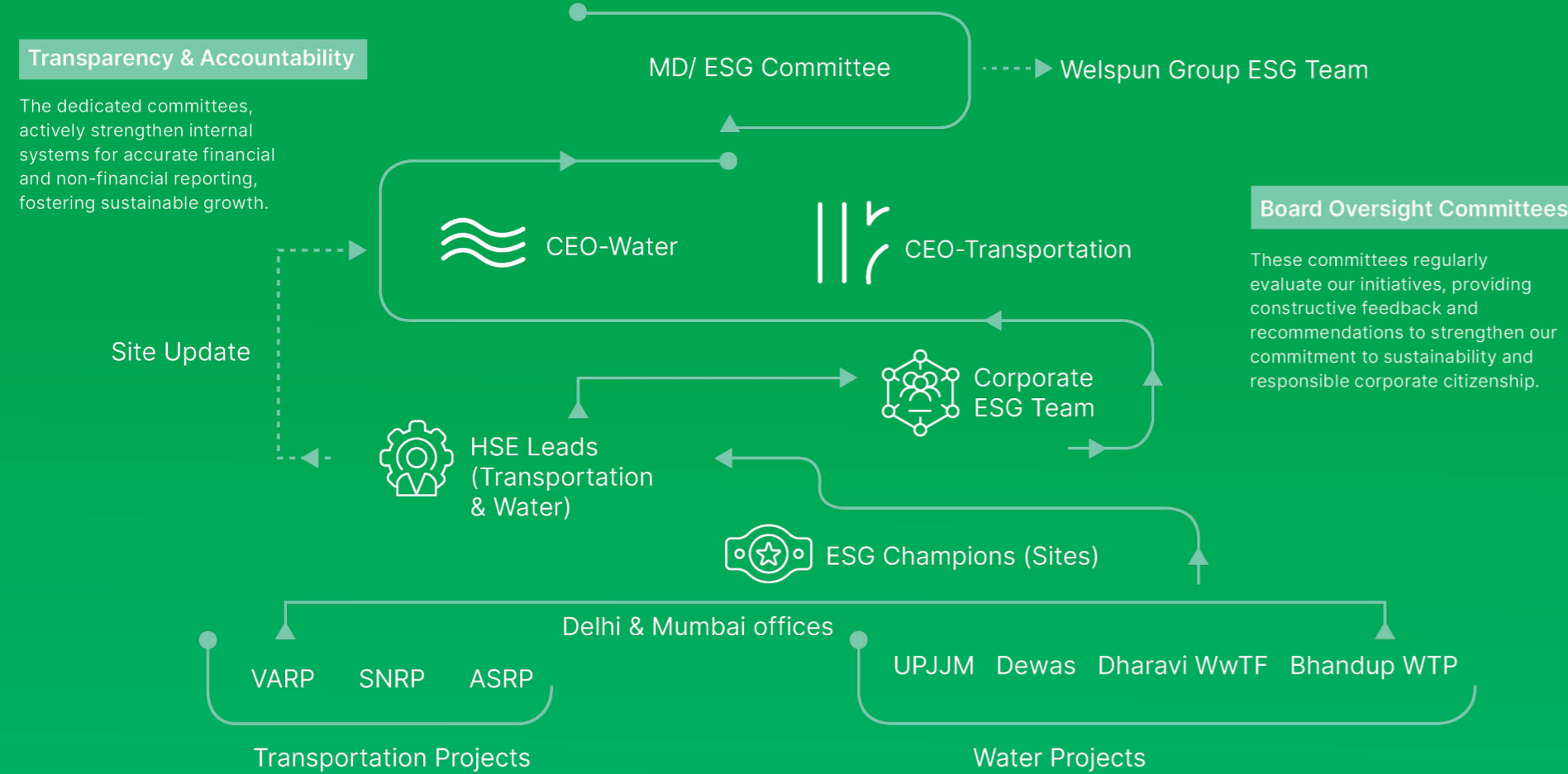
WeVolunteer program is an initiative for employee engagement, focused on community-based programs for improving employee satisfaction.

9,200+
Volunteering Hours



Governance

Welspun prioritizes Governance in its ESG framework, implementing a three-layered structure for effective oversight and future planning. The Corporate Governance system prioritizes transparency, accountability, ethical behaviours, safety, responsibility, and adherence to regulatory standards across our entire organization which underscores our broader sustainability efforts.



Welspun Enterprises Aspirations

1 Climate- Related Risk Management

Being in the infrastructure sector, the company is most vulnerable to the effects of climate change. As climate change impacts become more severe and widespread, the assessment of climate-related risk is becoming increasingly important.

- Identify climate related risk
- Develop risk-mitigating strategies



2 Scenario Analysis

Scenario analysis is a powerful tool for considering different possible futures and exploring the potential implications of different events and trends.

Impact Analysis: Modelling the consequences of different events and trends and considering how different factors may interact to produce different outcomes.



Our People, Our Pride!



Our employees are our priority. At Welspun, we are committed to nurturing them in an environment that is diverse and empowers creativity and innovation. Our goal is to create a better tomorrow for future generations, and we share our employees' sense of pride in their contributions towards building our nation.

Welspun Enterprises has been ranked 37th among India's Top 100 Great Mid-size Workplaces for 2024 and has also earned the coveted "Best in Industry: Construction & Infrastructure" accolade, bestowed by Great Place to Work® Institute. These achievements are a testament to the hard work, dedication & positive ethos embodied by each member of our organization, while reflecting the steadfast commitment of the organisation to cultivate a culture of excellence.



Welspun ENTERPRISES

LITE

At Welspun, we live by a set of fundamental core values that define who we are and how we operate.



Learning

Discover something new, every day.

Focused Learning – Learning programs

We offer focused & customized 'Learning Journeys' which help improve employee skills & competencies, we believe that the advancement of an employee in turn contributes to organizational growth.

Learnovate, our comprehensive learning program fosters holistic professional development, emphasizing personal mastery, self-leadership, empathetic people management, and strategic business acumen.

Leadership Development

Group Leadership Program
Comprehensive training and mentorship for visionary leaders to drive impactful change within teams and organizations.

Dhruv - Leadership Excellence
Development journeys to build future-ready leaders through self-discovery workshops, individual development plans and action learning projects.

Urja - Individual Excellence
Competency development program focussing on strategic thinking and people management for career advancement.

Career & Growth

Fast Track Opportunity (MT to CEO)
Unique career acceleration path from Management Trainee to CEO for talented individuals.

Horizontal Growth
Access to growth opportunities across sectors, geographies, and industries, fostering interdisciplinary learning and cross-functional expertise.

Recognition & Rewards (R&R)

WELDONE Program
An R&R platform to recognize individuals and teams upholding LITE values and demonstrating excellence, in line with the organization's goals.

Compensation & Incentives
Competitive Compensation: Market-leading package recognizing and rewarding high performance.

Performance-Based Incentives
Robust system with transparent criteria for additional rewards based on contributions.

Long-Term Incentives
Sharing rewards of sustained success, providing employees a stake in company performance and growth.



Innovation

Do things differently & do different things.

Entrepreneurial Spirit at Welspun

At Welspun, we ingrain every aspect of our operations with an entrepreneurial mindset. Encouraging bold risk-taking and innovative thinking, we empower our teams to drive impactful change and explore new territories.

Technology

Our innovative use of cutting-edge technology enhances efficiency and excellence across our business. From optimizing production processes to delivering exceptional customer experiences, we continuously strive to stay ahead in the industry's dynamic landscape, ensuring seamless integration of technology in all our operations.



Trust

Make truth & transparency a virtue

Employee Feedback Mechanism

Utilizing tools like WeLissen from GPTW and Amber from infeedo, we gather real-time insights from employees to shape our employee experience programs. Our initiatives aim to encourage employees to be their authentic selves and develop a sense of belonging within the organization.

Diversity, Equity & Inclusion

We actively promote inclusive growth and equal rights for everyone, regardless of background or identity. Our WOW community empowers women within Welspun, providing opportunities for skill-building, leadership training, and career advancement.

Flexibility at Work

Embracing remote collaboration and agile schedules, we foster a trusting and adaptive culture that empowers us to respond swiftly to market dynamics. Flexibility amplifies productivity and enables seamless integration of diverse talent and ideas, propelling sustained growth.

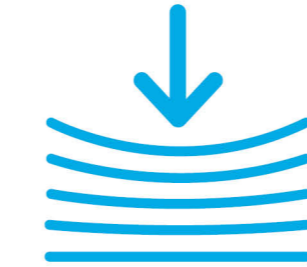
Psychological Safety at Workplace

Fostering psychological safety is essential for trust and collaboration. We provide mental wellness support, including helplines and regular wellness drives, and a strong mechanism for POSH, to ensure employees feel safe expressing ideas and concerns without fear of judgment.



Endurance

Push beyond your limits & aspire for more.



Pride of Being a Nation-builder

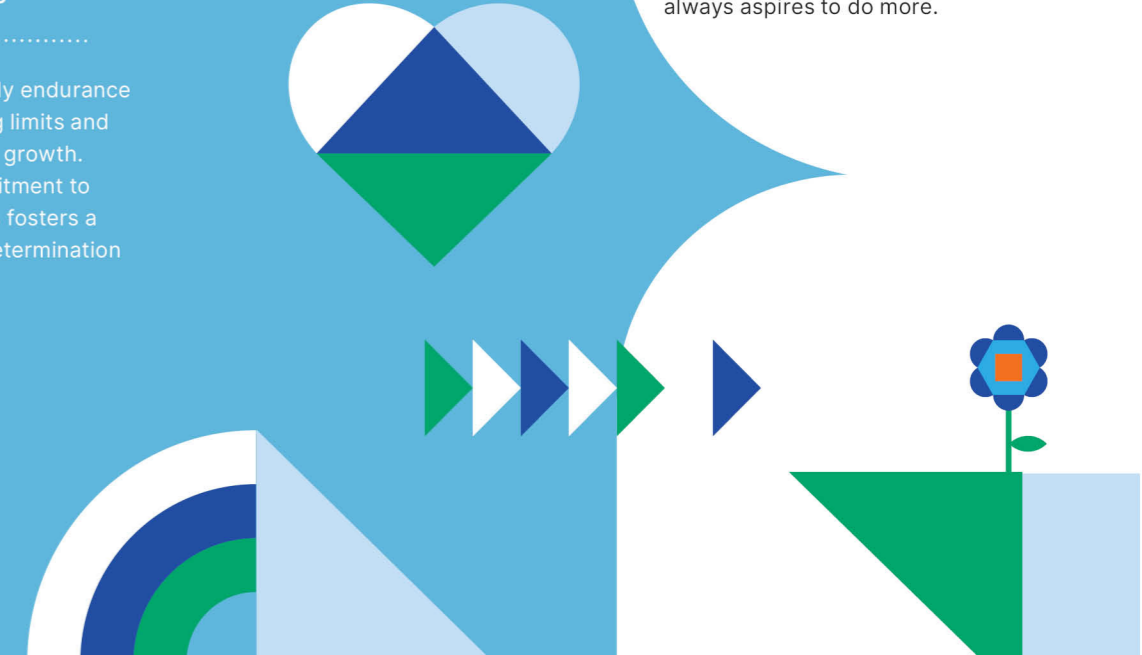
As a leading Indian infrastructure developer, we embrace our diverse identity, propelling innovation and excellence. Our diverse footprint across the country reflects our commitment to enriching communities, guided by our unwavering values and passion for sustainable growth.

ESG Commitment

Our proactive leadership integrates consumer-driven and innovation-led ESG initiatives into our operational paradigms. The 'ESG Compass' tool facilitates data monitoring and reporting on 30+ ESG KPIs, promoting higher transparency, social outreach, and environmental protection. These values form the very core of our existence, shaping every decision and action we make further guiding us towards a future of excellence and distinction.

Endurance and Resilience

At Welspun, we embody endurance and resilience, pushing limits and striving for continuous growth. Our unwavering commitment to surpassing boundaries fosters a culture of relentless determination and achievement.



Bringing LITE to Life through WELDONE Awards:

Learning - Eklavya Award: For the limitless learner who is always keen to discover something new everyday.

Innovation - Aryabhata Award: For the inquisitive innovator who can transform things for the better with new ideas.

Trust - Yudhishtira Award: For the trustworthy torchbearer whom everyone trusts beyond any doubt.

Endurance - Bheeshma Award: For the enduring epitome of resilience who has pushed beyond limits and always aspires to do more.



Welspun[®]ENTERPRISES

Welspun Enterprises Limited

Corporate Office: Welspun House, Kamala City, Senapati Bapat Marg,
Lower Parel (W), Mumbai - 400 013, India

Tel.: +91 22 66136000 | Fax: +91 22 24908020

Registered Office: Welspun City, Village Versamedi,
Taluka Anjar, District Kutch, Gujarat - 370 110, India

Tel.: +91 2836 662222 | Fax: +91 2836 279010

companysecretary_wel@welspun.com
www.welspunenterprises.com

Scan QR Code to download
e-book version

